



## REIMAGINING FRANKLIN HIGH SCHOOL

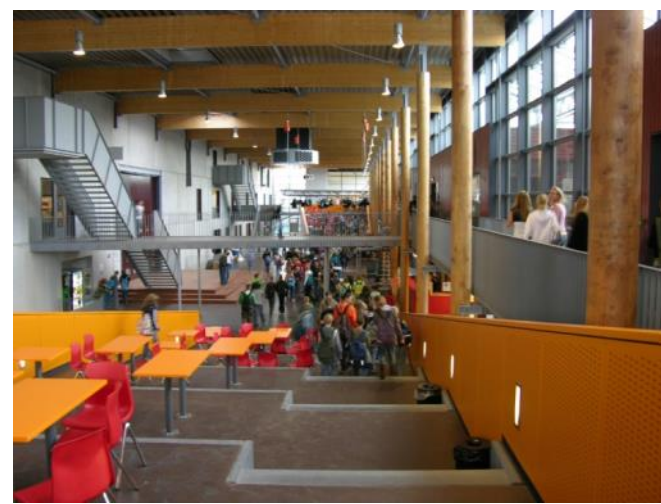


+

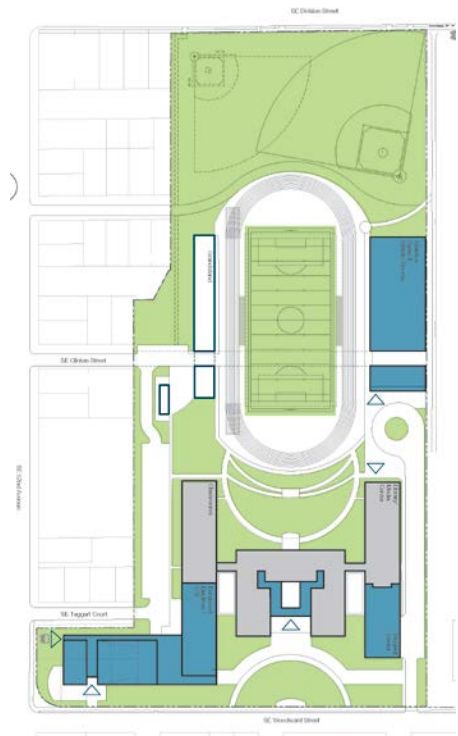
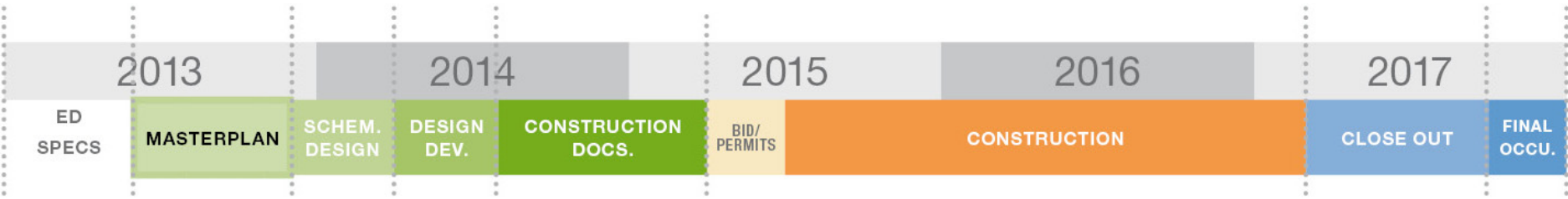


**COMMUNITY DESIGN WORKSHOP**  
**MARCH 8, 2014**

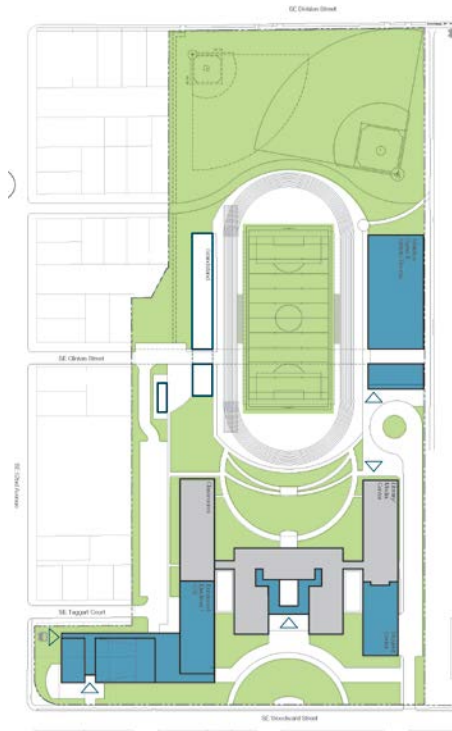
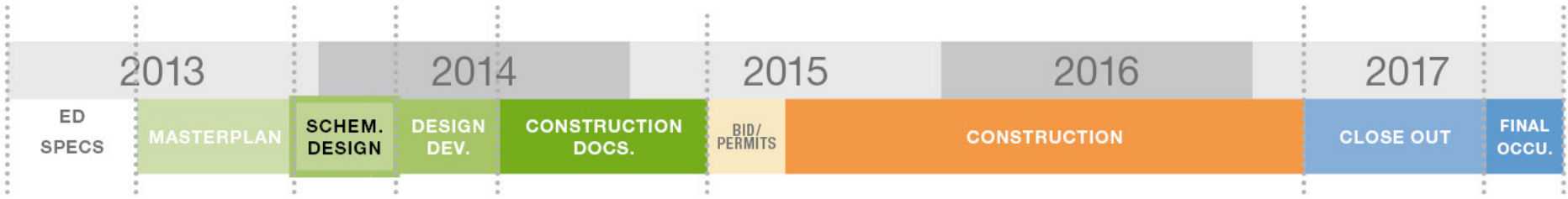
- 1. Project Status Review**
- 2. Design Update**
- 3. Career Pathways**
- 4. Learning Neighborhood Model Presentation**
- 5. Learning Neighborhood Model Exercise**



**agenda**

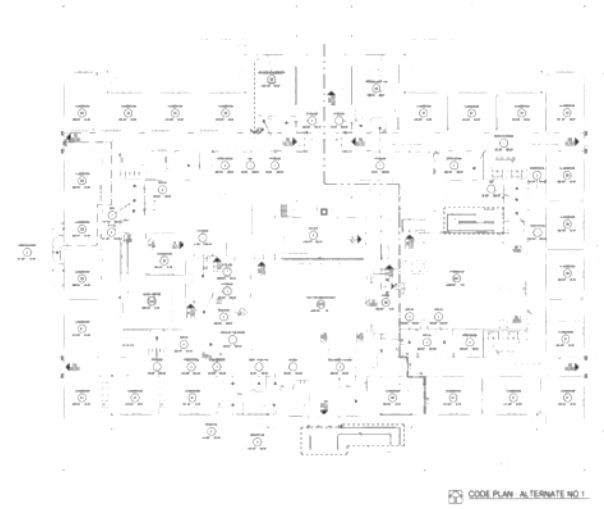
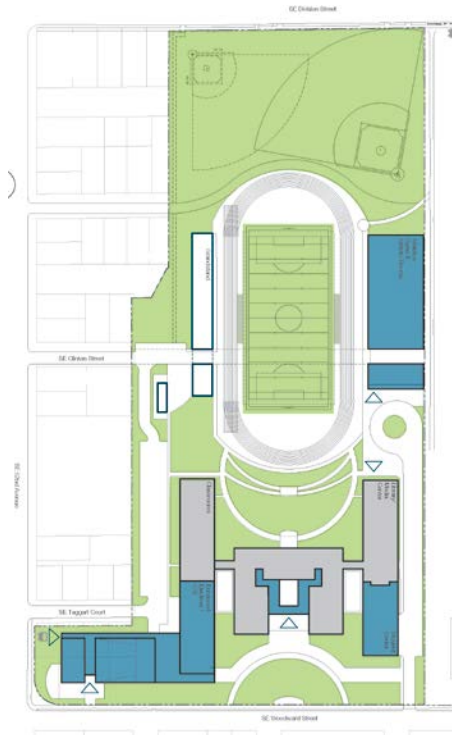
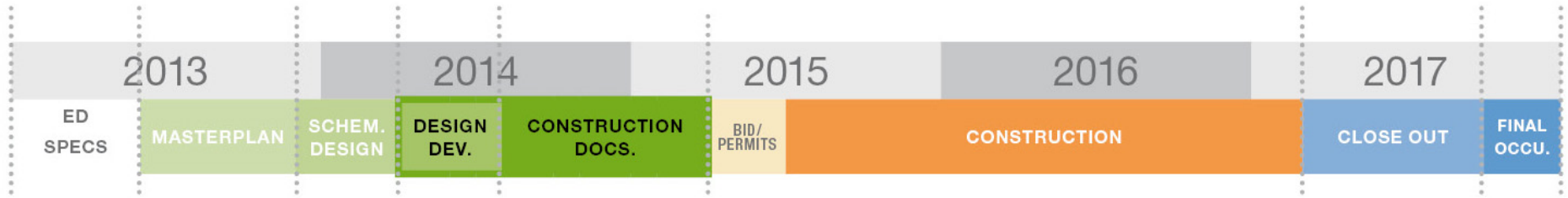


## schedule & process



**schedule & process**





**schedule & process**

# Masterplanning

**FHS Faculty/Admin – Oct. 29, 2013**

**FHS Students/Faculty – Oct. 31, 2013**

**Internal PPS/BESC**

**Maintenance – Oct. 31, 2013**

**Transportation – Oct. 31, 2013**

**PTSA – Oct. 9, 2013**

**Latin Parent Night – Oct. 9, 2013**

**Community Design Workshop 1 – Sept. 9, 2013**

**Community Design Workshop 2 – Oct. 26, 2013**

**Open-house (FHS Campus) – Nov. 20, 2013**

**Design Advisory Group (DAG) Meetings**

**June 10, 2013**

**July 25, 2013**

**Aug. 5, 2013**

**Aug. 19, 2013**

**Sept. 11, 2013**

**Oct. 2, 2013**

**Nov. 5, 2013**

**community engagement process**



# Schematic Design

**FHS Staff - Jan. 6, 2014**

**FHS Staff update – Jan. 15, 2014**

**FHS Focus Group Mtgs**

**Administration – Jan. 14, 2014**

**SPED – Jan. 14, 2014**

**Counsel – Jan. 15, 2014**

**Media Center – Jan. 16, 2014**

**Science – Jan. 16, 2014**

**Student Body – Jan. 17, 2014**

**CTE – Woods/Metal Shops – Jan. 21, 2014**

**General Ed Classrooms – Jan. 22, 2014**

**Athletics/Coaches/PE – Jan. 26, 2014**

**Fine Arts and Performance – Jan. 26, 2014**

**Foods Classroom (Culinary Arts) – Feb. 6, 2014**

**Partners-SUN, Step-up, SBHC – Feb. 19, 2014**

**Nutrition Services/Cafeteria – Feb. 21, 2014**

**PTSA – Feb. 12, 2014**

**Internal PPS - BESC/FHS**

**Grounds Maintenance – Feb. 11, 2014**

**Transportation – Feb. 11, 2014**

**Safety and Security – Feb. 11, 2014**

**IT – Feb. 11, 2014**

**community engagement process**





# Schematic Design

## Design Advisory Group (DAG) Meetings

Jan. 23, 2014

Feb. 18, 2014

## Neighborhood Association Outreach

SE Uplift NA – Jan. 6, 2014

Mt. Tabor – Jan. 15, 2014

South Tabor – Jan. 16, 2014

Richmond – Feb. 10, 2014

## Various Educational Site Tours

Bus Tour – Seattle/Tacoma Schools – Aug. 14th, 2013

Franklin High School

Garfield High School

Roosevelt High School

Lincoln High School

Wilsonville High School – Oct. 9, 2013

Skyview High School-Vancouver, WA – Oct. 24, 2013

Hillsboro High School Stem/CTE facility – Nov. 6, 2013

PCC Rockcreek-Bldg Const Tech Program – Jan. 31, 2014

Center for Advanced Learning (Gresham) – Feb. 5, 2014

ADX Portland – Maker Space / Shop – Feb. 27, 2014



**community engagement process**



# Schematic Design

## Upcoming Meetings

**Community Design Workshop**

**Mar 8, 2014**

**Design Advisory Group (DAG) Meetings**

**TBD**

**Open House (FHS Campus)**

**TBD**

**PLEASE JOIN US**



**community engagement process**

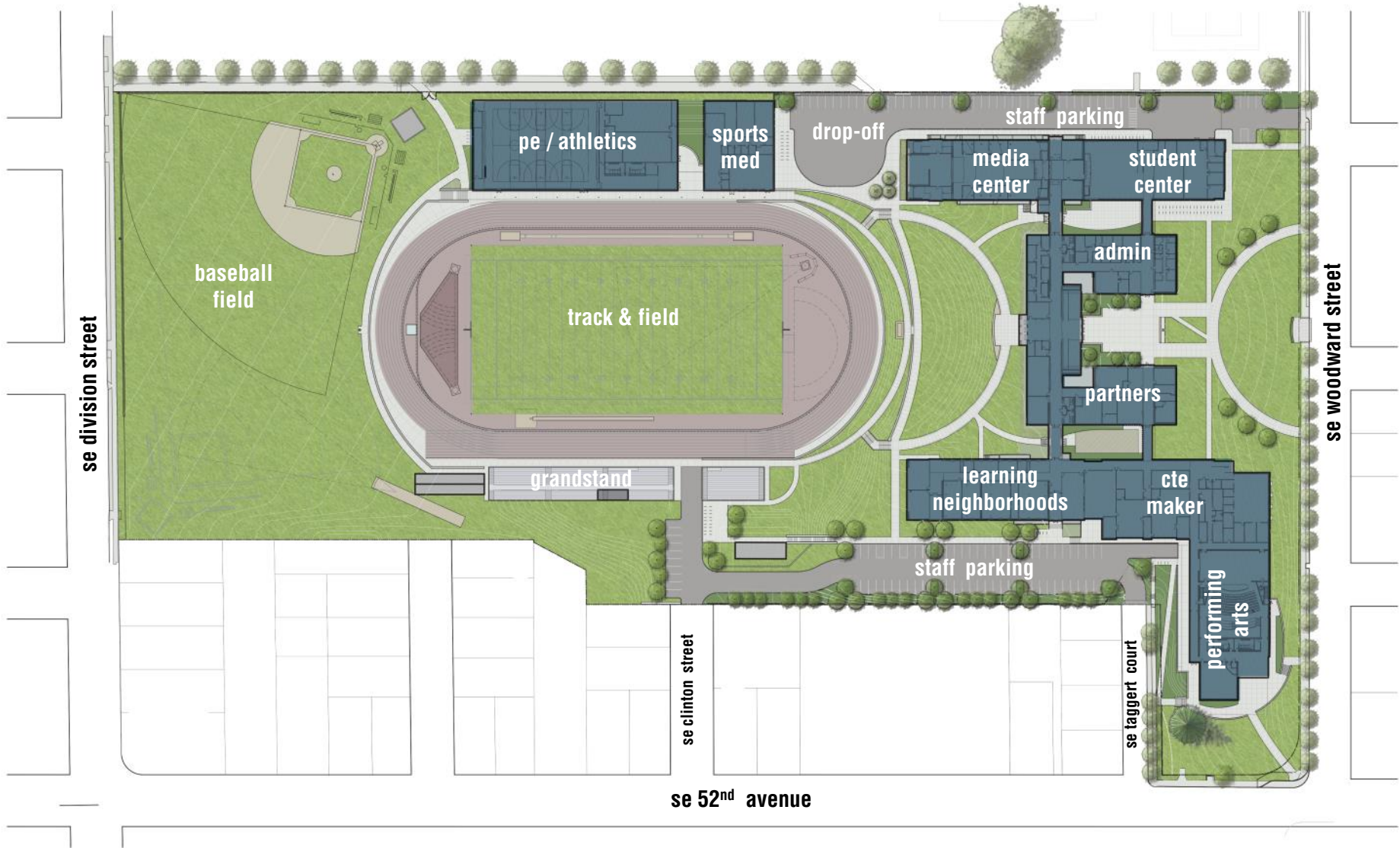
**design update**

# Franklin HS – 1,700 Students

General Ed Classrooms	Proposed	57,585 SF
Science & Math Classrooms:		32,547 SF
Career Preparedness / CTE:		26,150 SF
Fine & Performing Arts:		32,898 SF
Athletics / Sports Medicine:		43,333 SF
Admin & Counseling:		12,608 SF
Media Center / Library:		15,852 SF
Student Center / Commons:		17,465 SF
Partner / Wrap-Around Services:		6,841 SF
<b>Total Gross Program Area:</b>		<b>245,279 SF</b>

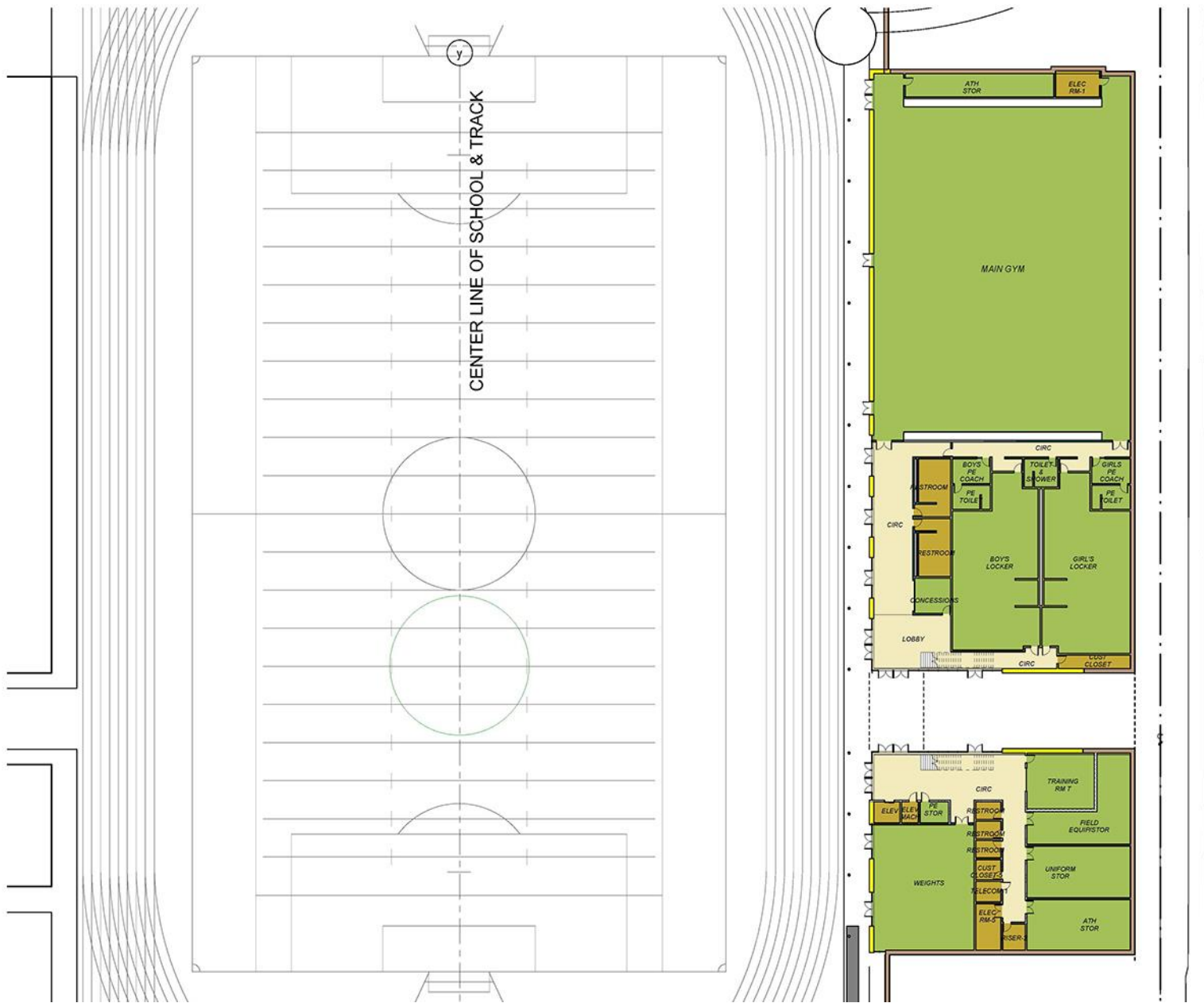
area program



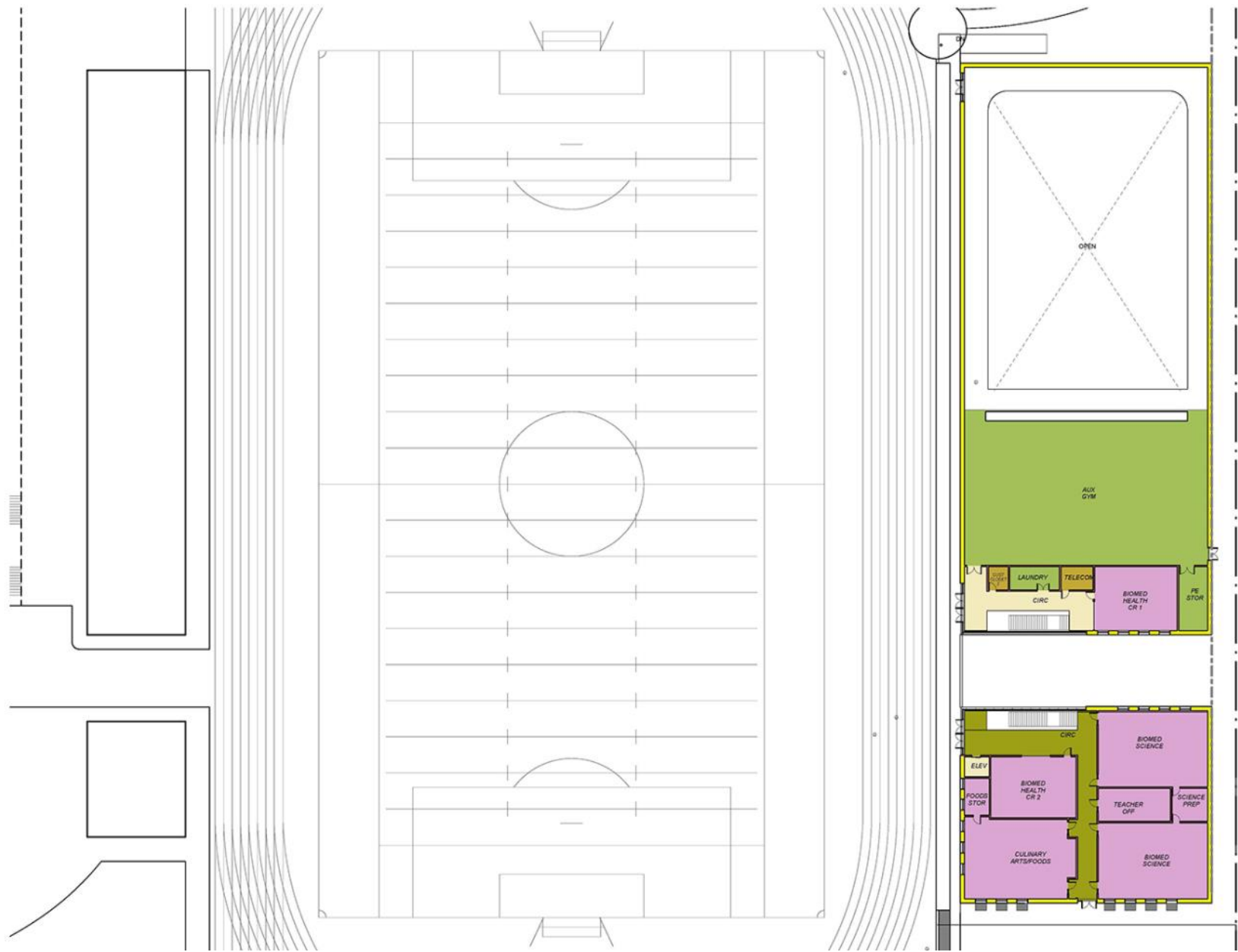


**site plan**

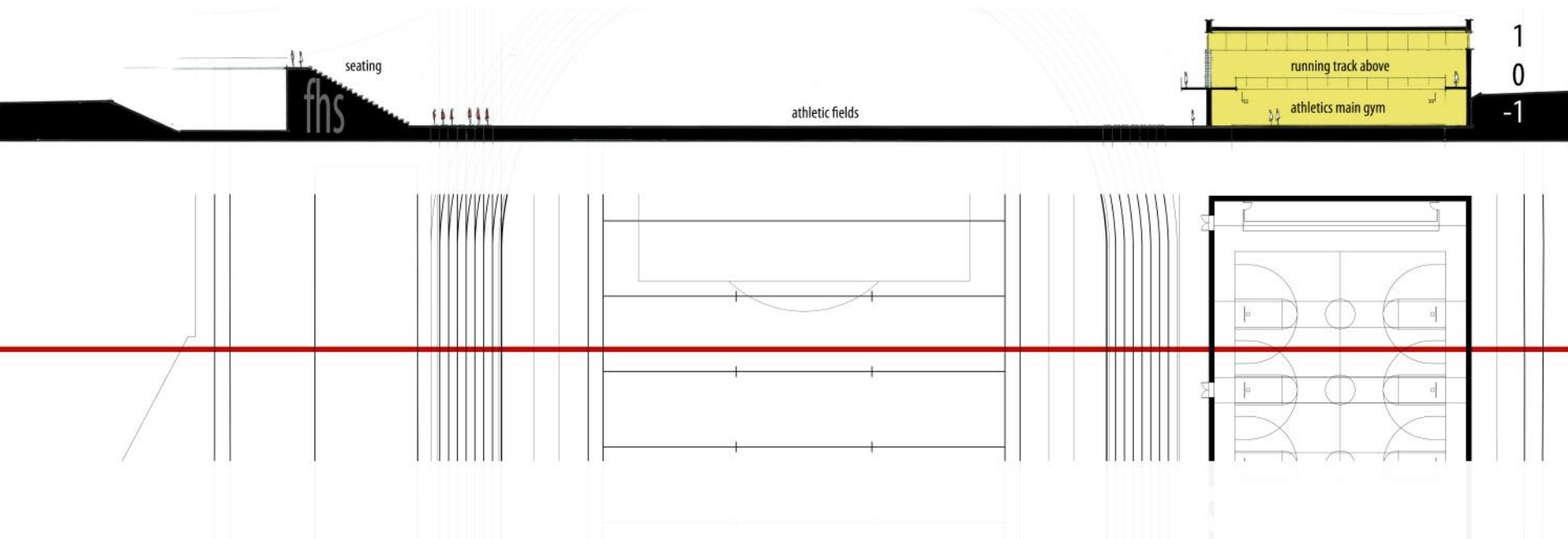




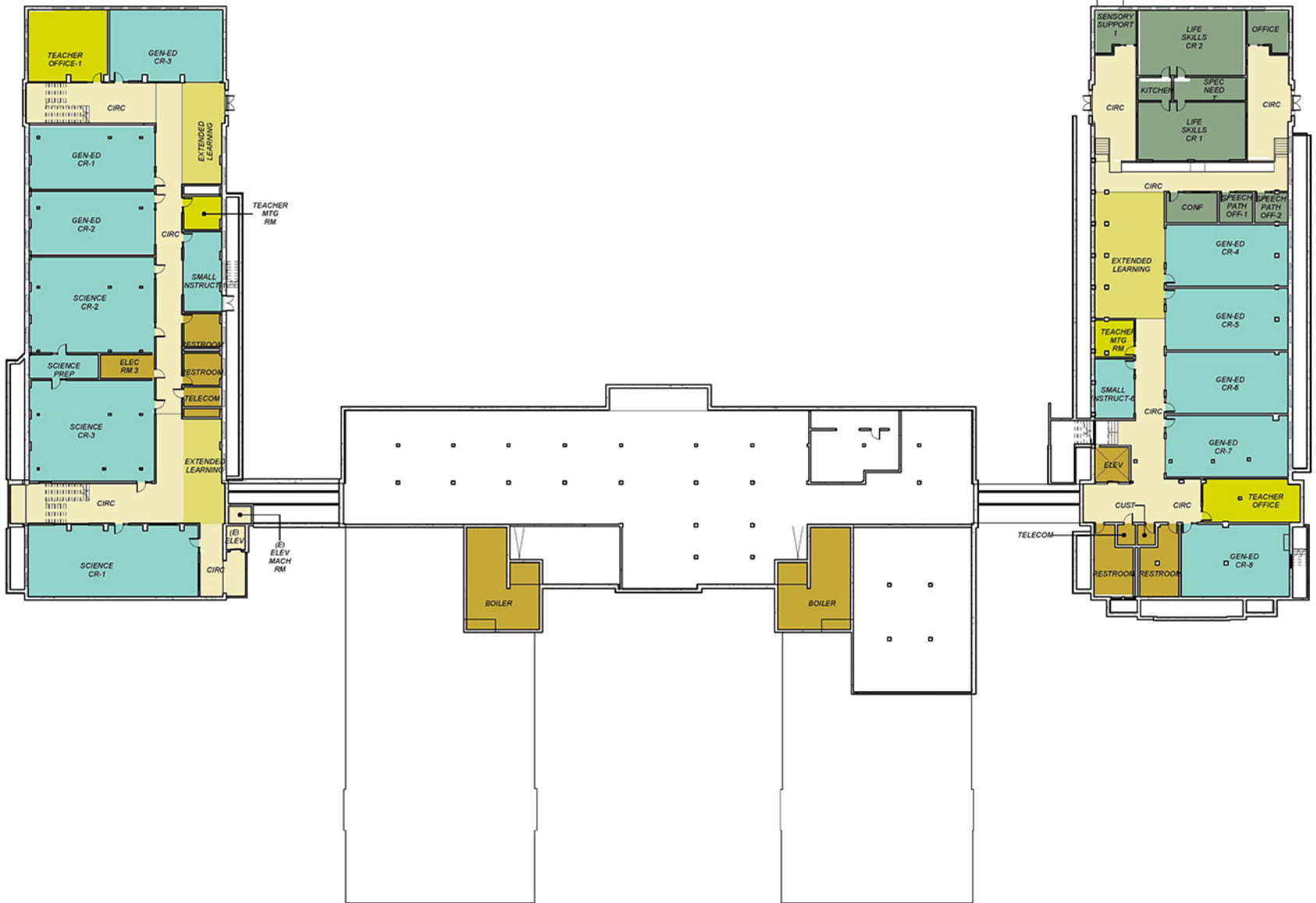
**athletics – biomedical center - level -1**



**athletics – biomedical center - level 0**



**athletics – biomedical center - section**



**main building - level 0**

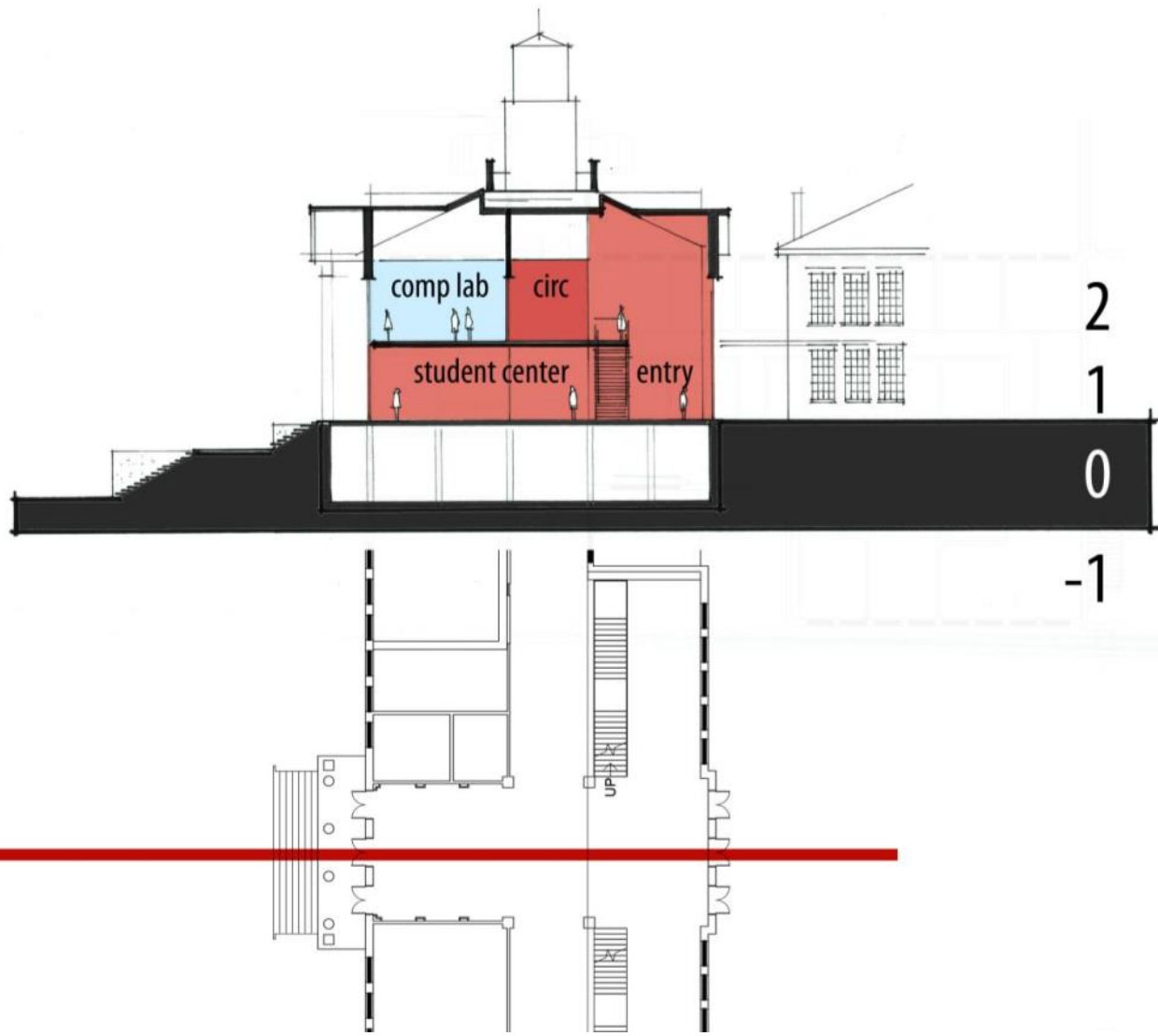




**main building - level 1**



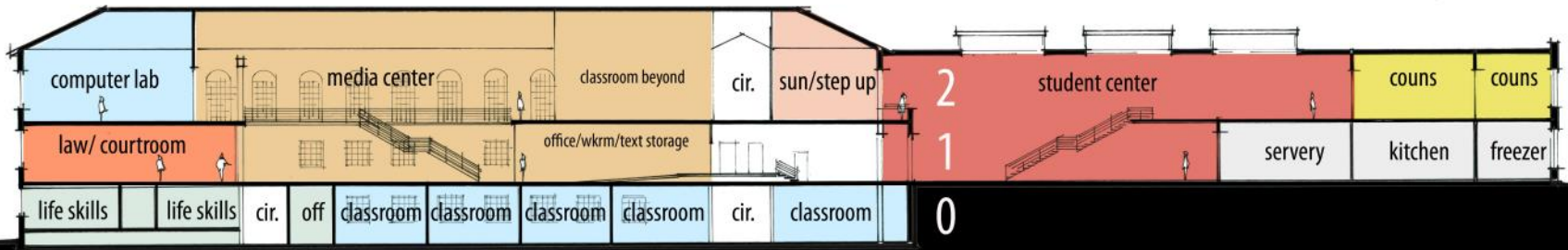
fhs



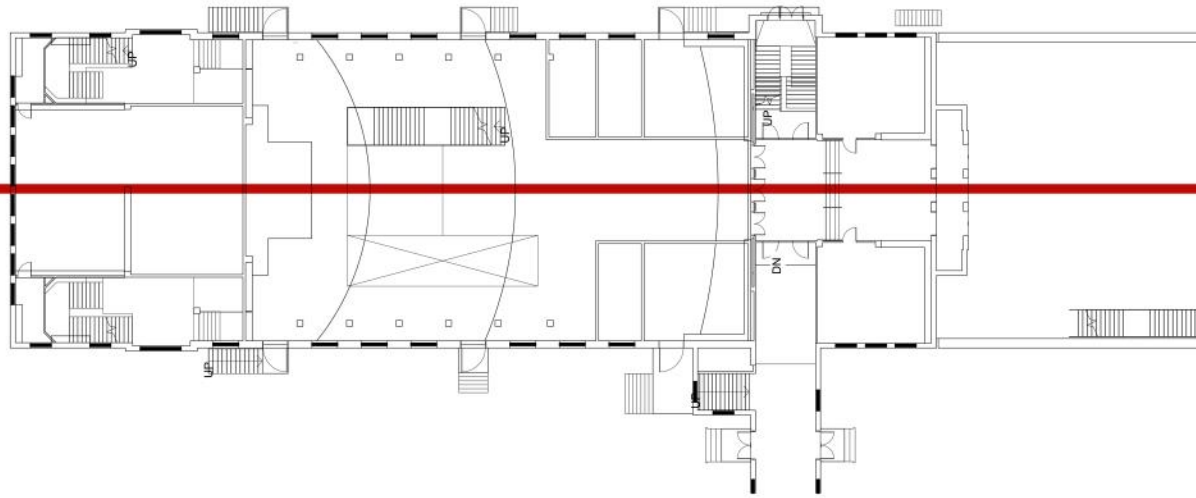
**student center entry section**



main building - level 2



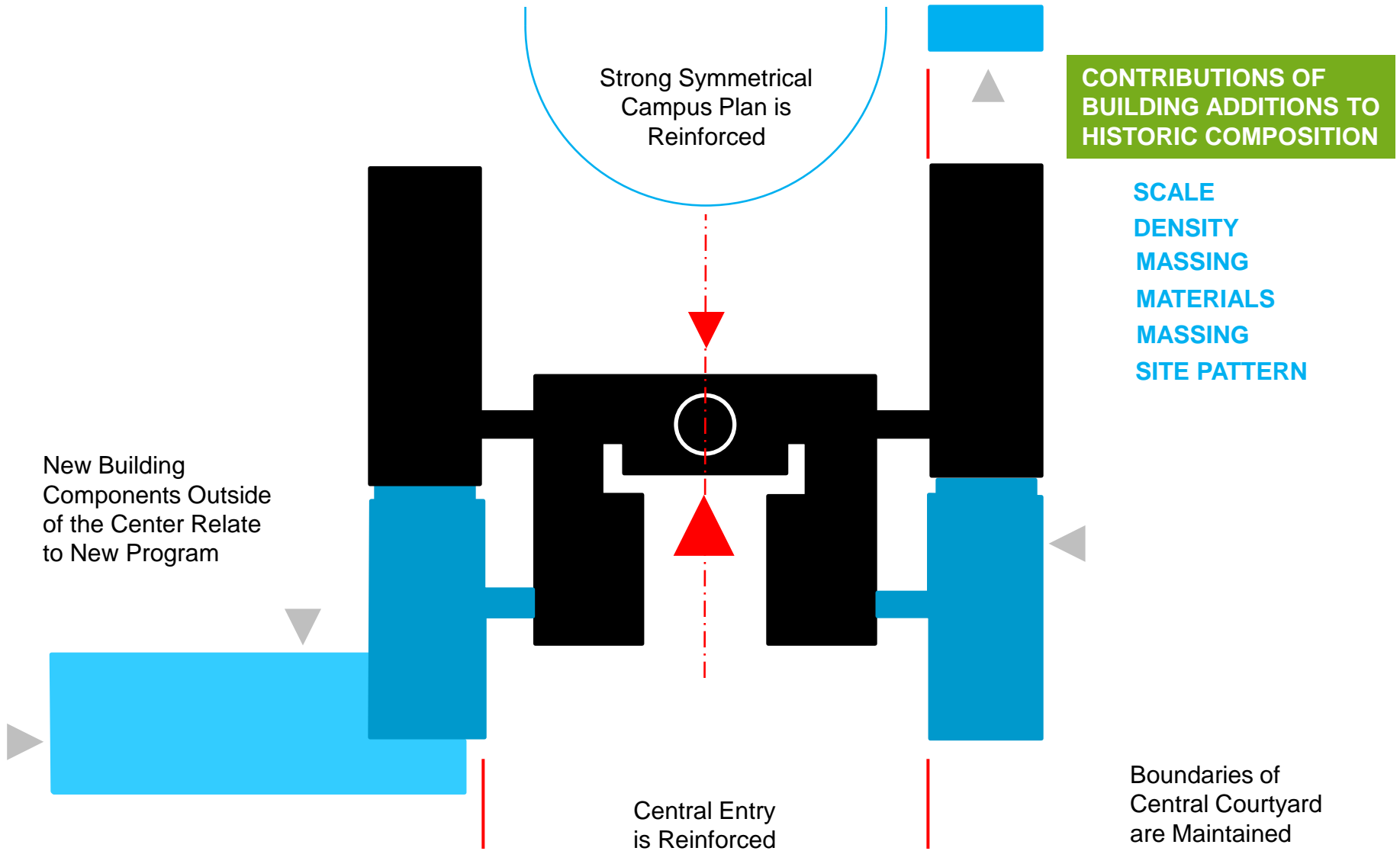
-1



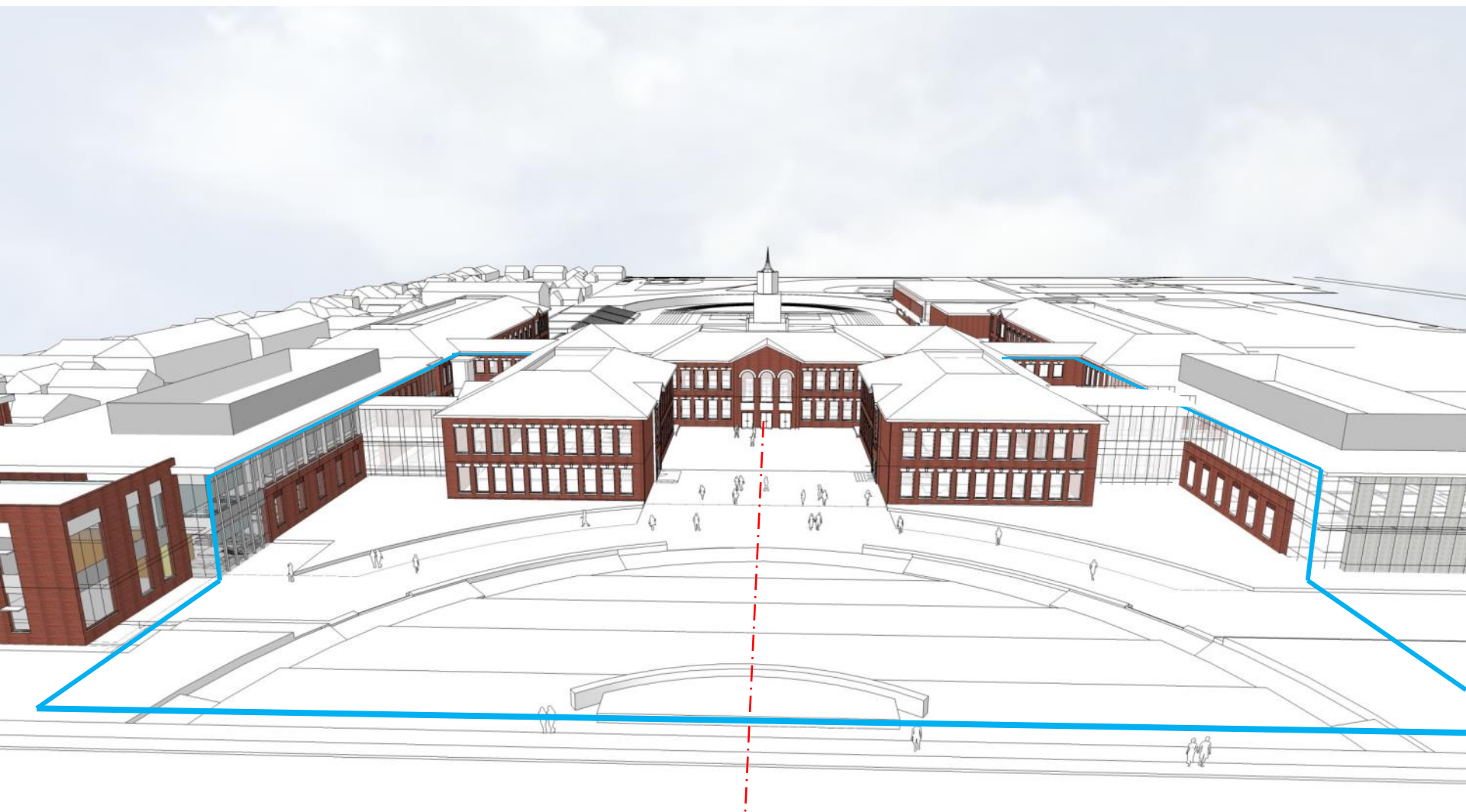
**student center / media center section**



**historic context**



## historic contextualism – design components



**historic contextualism – design components**



**historic contextualism – design components**



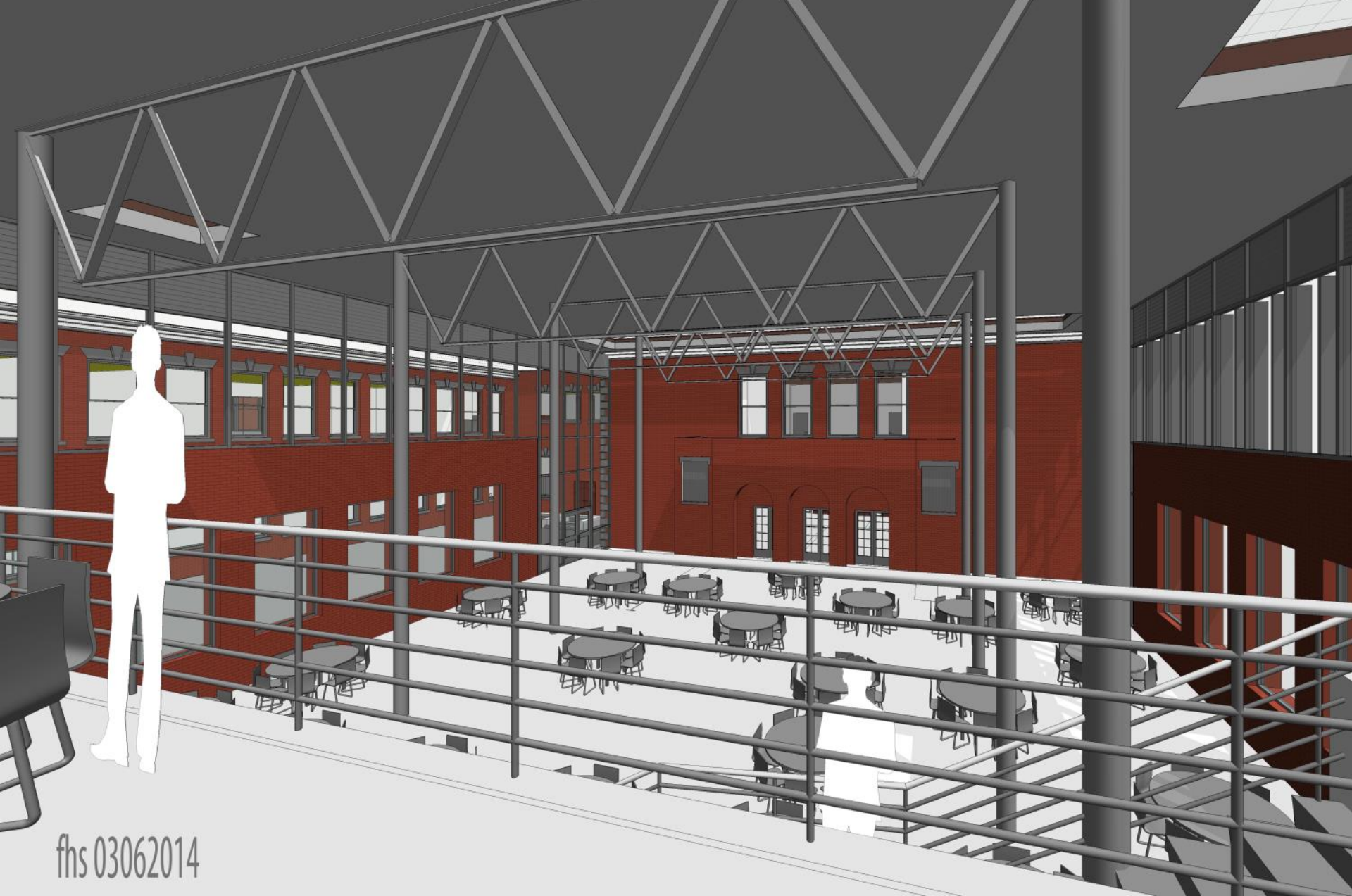


**main entry from woodward**



fhs 03062017

**student center - exterior**



fhs 03062014

**student center - interior**





fhs 03062014

**biomedical center**



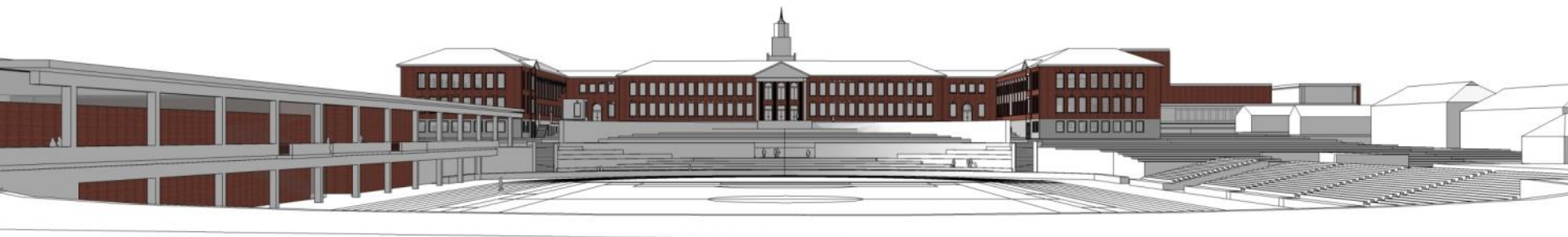
fhs 03062014



**athletics – biomedical center - lobby**



**athletics – north end**



**main building from division**



**performing & fine arts center**



**career pathways**



## ENHANCED ELECTIVES / CTE

### STEM Spaces

- Computer Lab with 3D printer
- Lecture Hall
- Small Group Work Space
- Project Display
- Robotics Lab



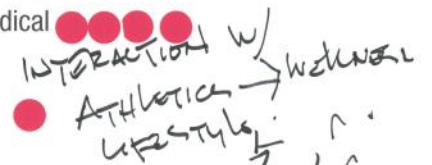
### Engineering Design | Construction

- STEM Lab - Woods & Metals
- Auto Shop
- AP Physics Lab
- AP Calculus
- Architecture | Engineering Lab



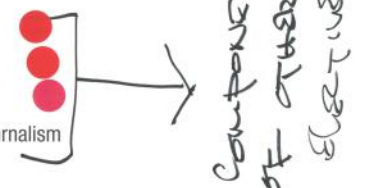
### Health Science | Biomedical

- Sports Medicine
- Health
- Anatomy
- AP Physiology
- AP Chemistry Lab
- STEM Lab - Biotechnology



### Information Technology

- Computer Labs
- Software Engineering Lab
- Web & Digital Media Lab | Journalism



### Law | Constitution

- Law Courtroom
- English
- History | Government



### Culinary Arts

- Foods | Culinary Arts Lab
- Greenhouse
- Garden



OTHER ?  
SMALL EDGERS / AUTOMOTIVE



FRANKLIN HIGH SCHOOL

November 20, 2013



# career pathways – community input

# Career Pathways: 21,950 SF

## Career Preparedness / CTE

### Dual Credit Programs

Woods   Metals   Maker Space	8,900 SF
Business   Information Technology	1,100 SF
Culinary Arts	2,000 SF
<u>Teen Parent Day Care</u>	<u>3,000 SF</u>
	15,000 SF

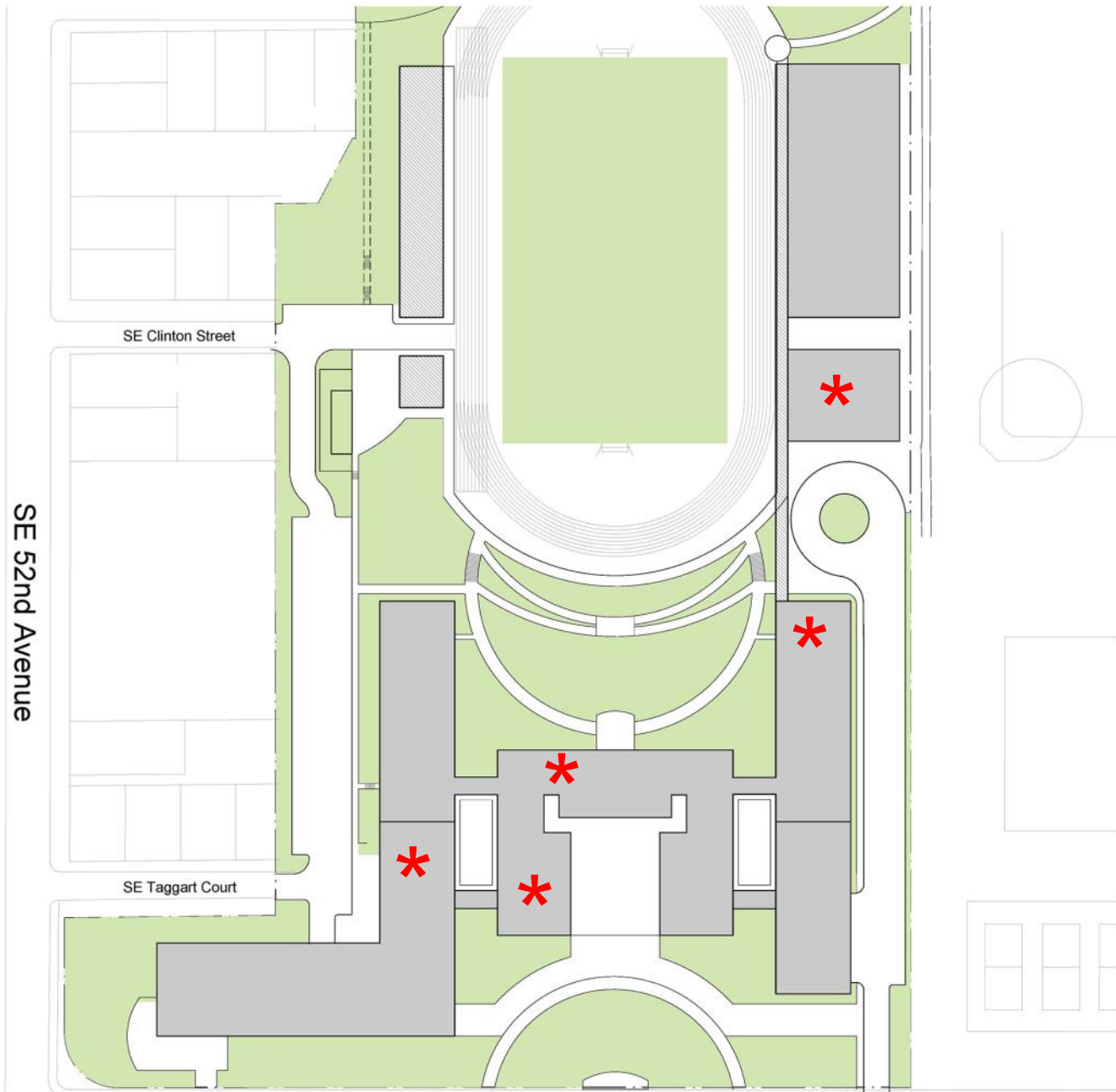
## Career Awareness and Exploration

### Enhanced Electives

Law   Constitution   Mock Trial	1,500 SF
Business   Information Technology	2,200 SF
<u>Health Science   Biomedical *</u>	<u>3,250 SF</u>
	6,950 SF



career pathways



**career pathways – nodes of discovery**



# Career Preparedness / CTE: Dual Credit Programs

15,000 SF

## Woods | Metals | Maker Space

8,900 SF

(2) Shops  
(2) Lecture / Lab Classrooms  
Maker Space  
3D Printer / CNC  
Support Space



## Business | Information Technology

1,100 SF

Business / Marketing Classroom



## Culinary Arts

2,000 SF

Culinary Arts Classroom

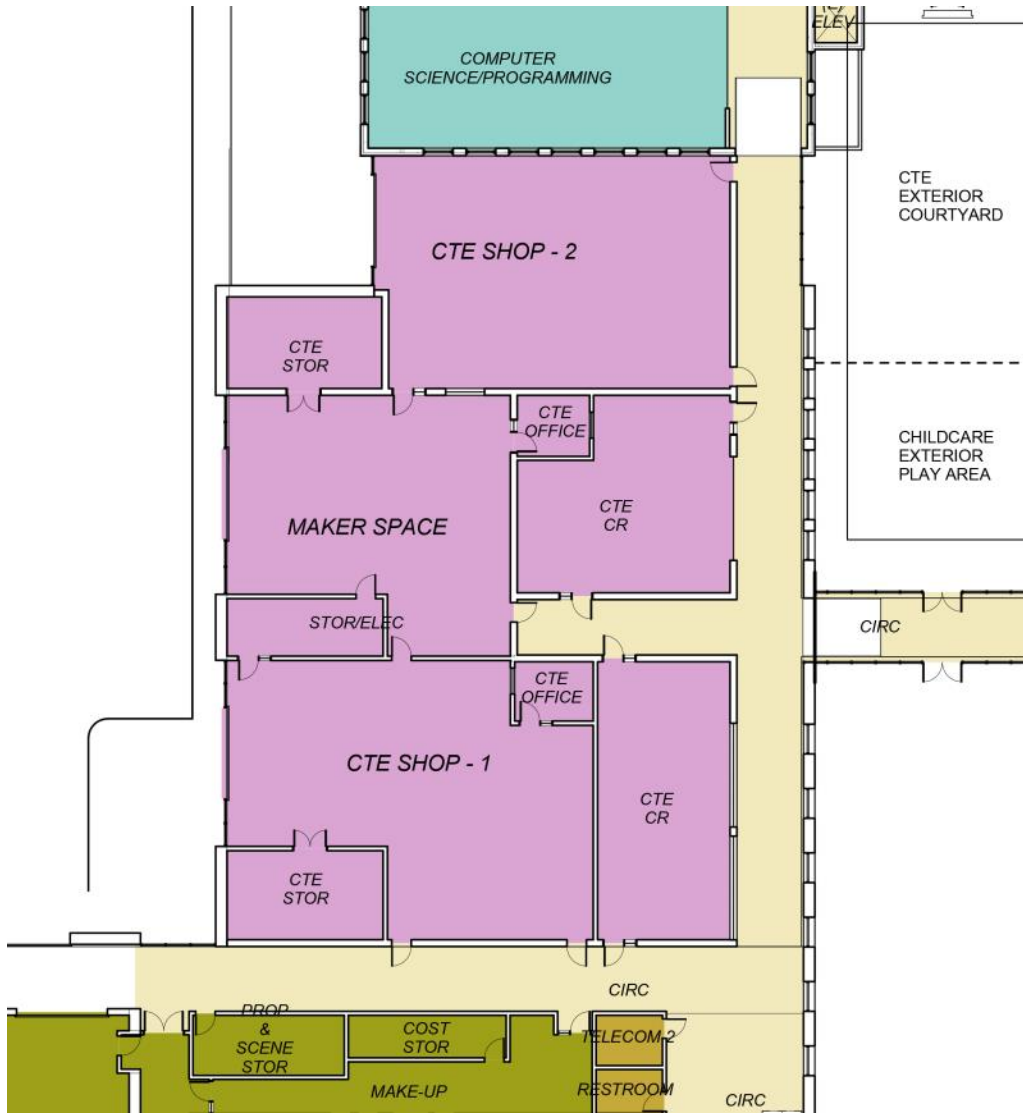
## Teen Parent Day Care

3,000 SF

Day Care Center  
Early Childhood Ed Classroom

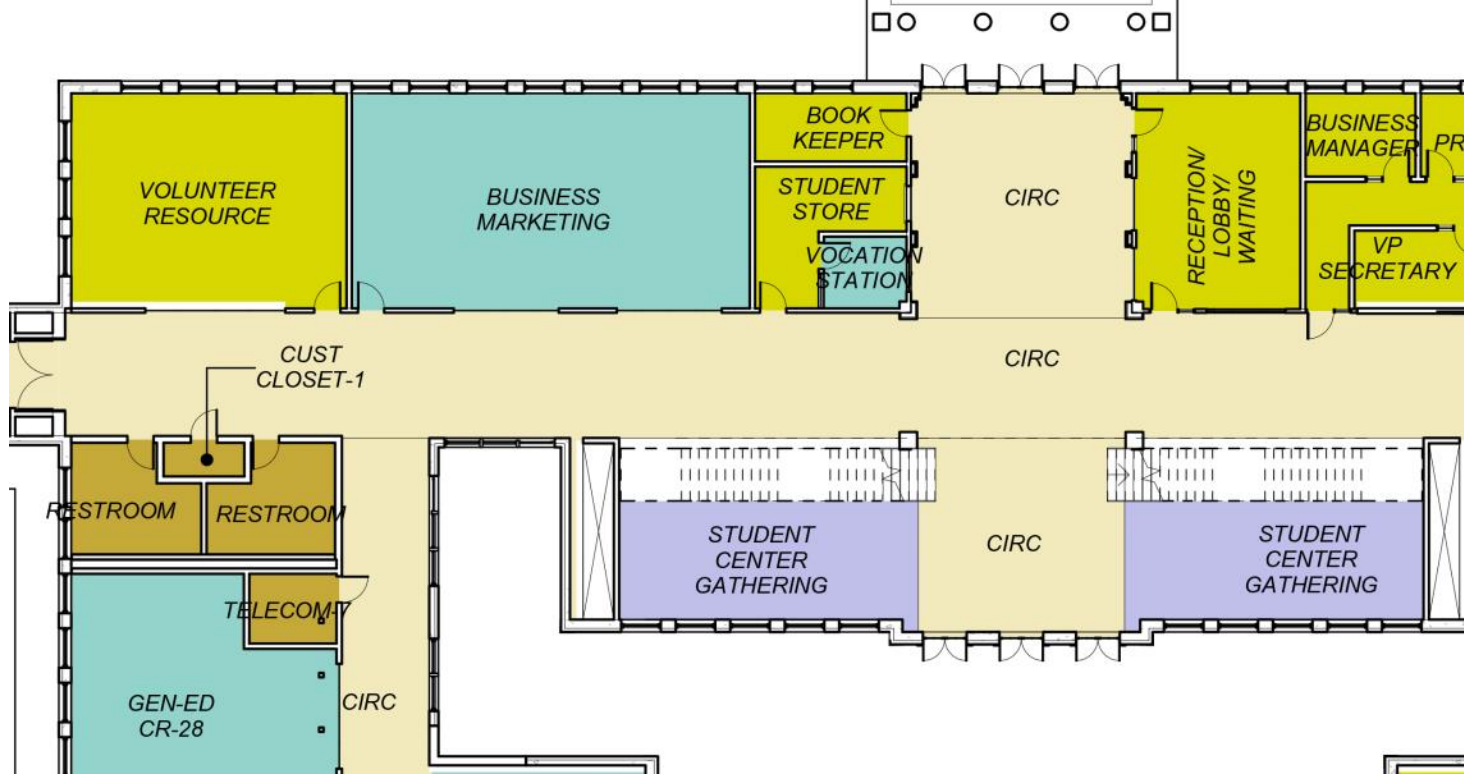


career pathways

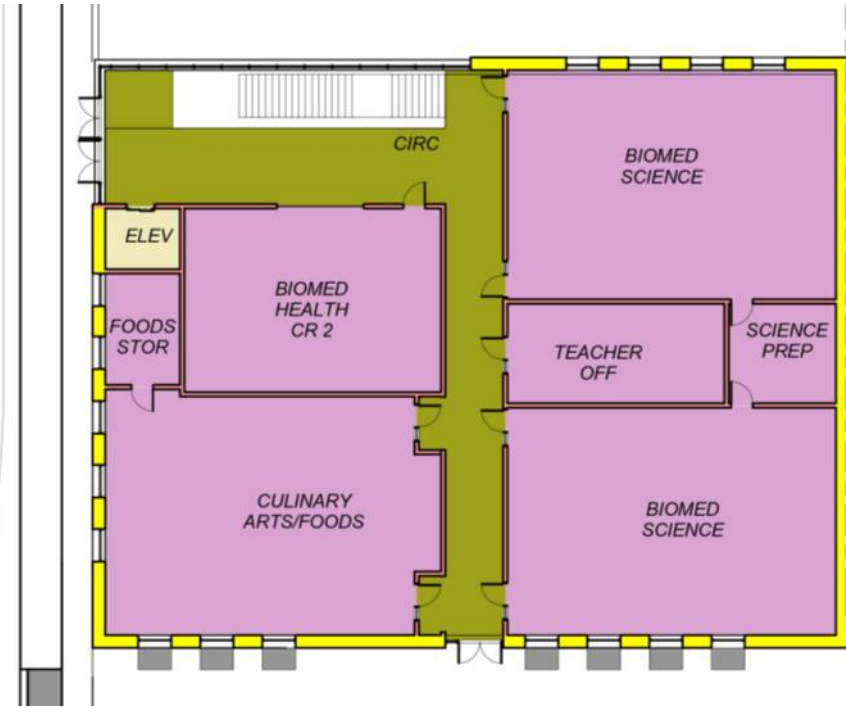


**woods | metals | maker space**



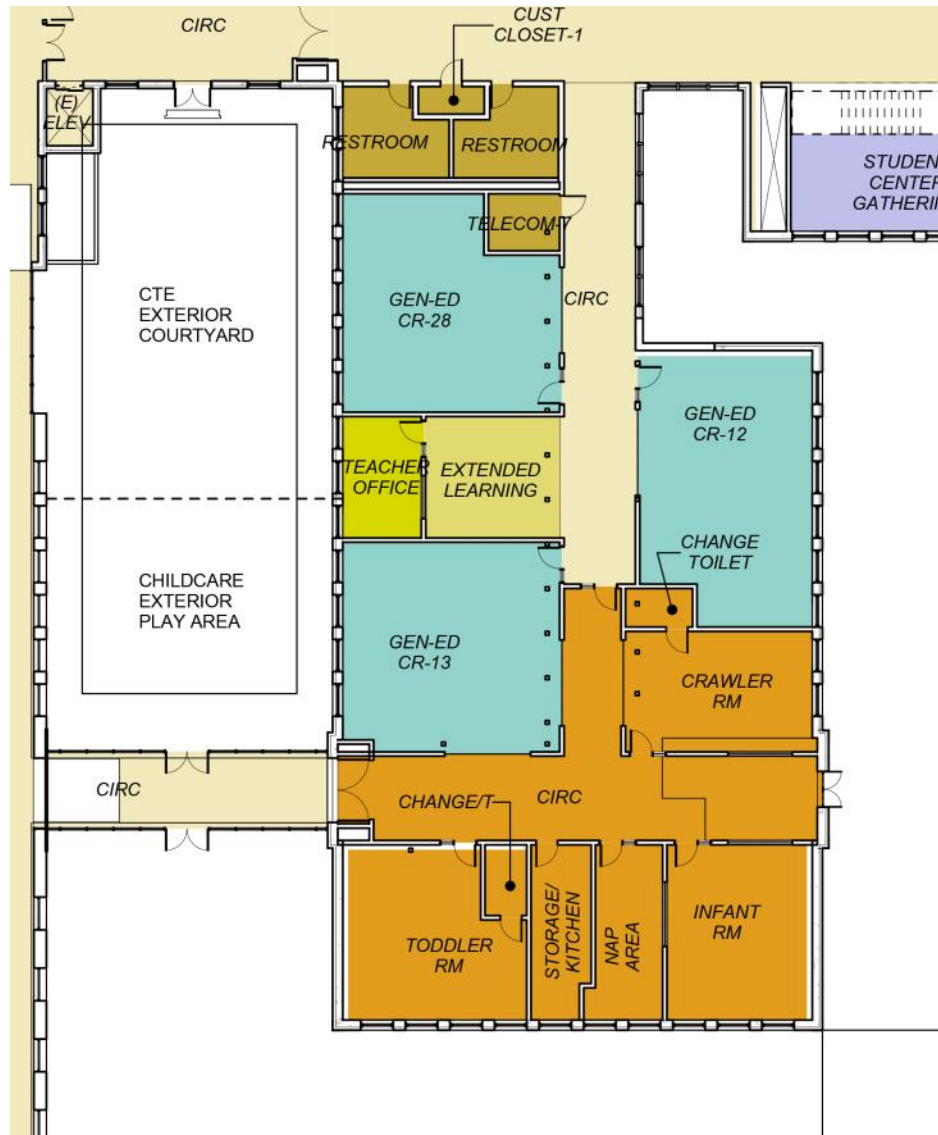


**business marketing**



**culinary arts**





**teen parent day care – early childhood ed**

# Career Awareness & Exploration : 6,950 SF

## Enhanced Electives

### Health Science | Biomedical \*

3,250 SF

- (2) Science Labs
- (2) Health Classrooms
- Training Room

### Law | Constitution | Mock Trial

1,500 SF

- Courtroom Classroom

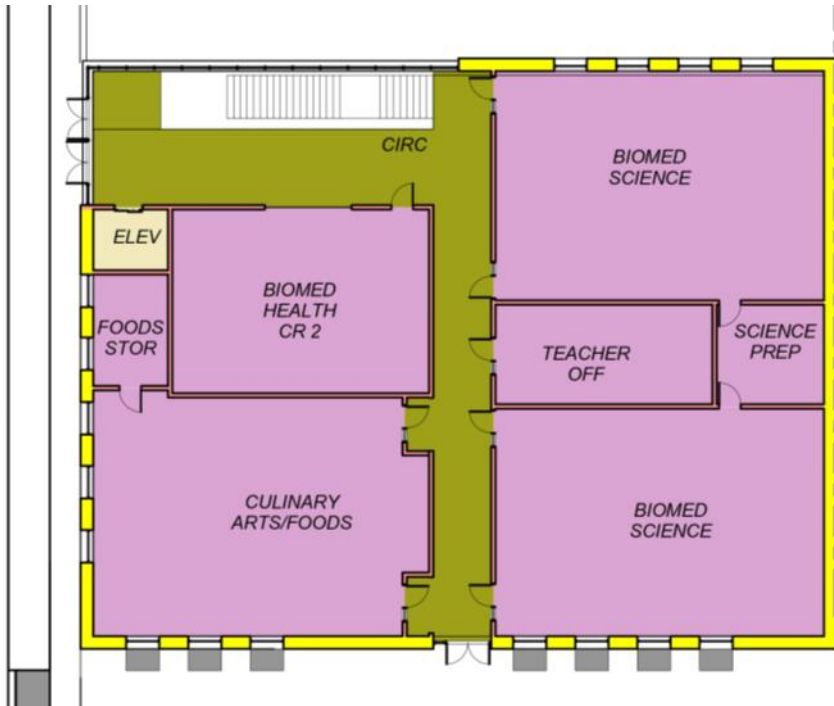
### Business | Information Technology

2,200 SF

- Digital Media / Journalism
- CAD / Computer Science

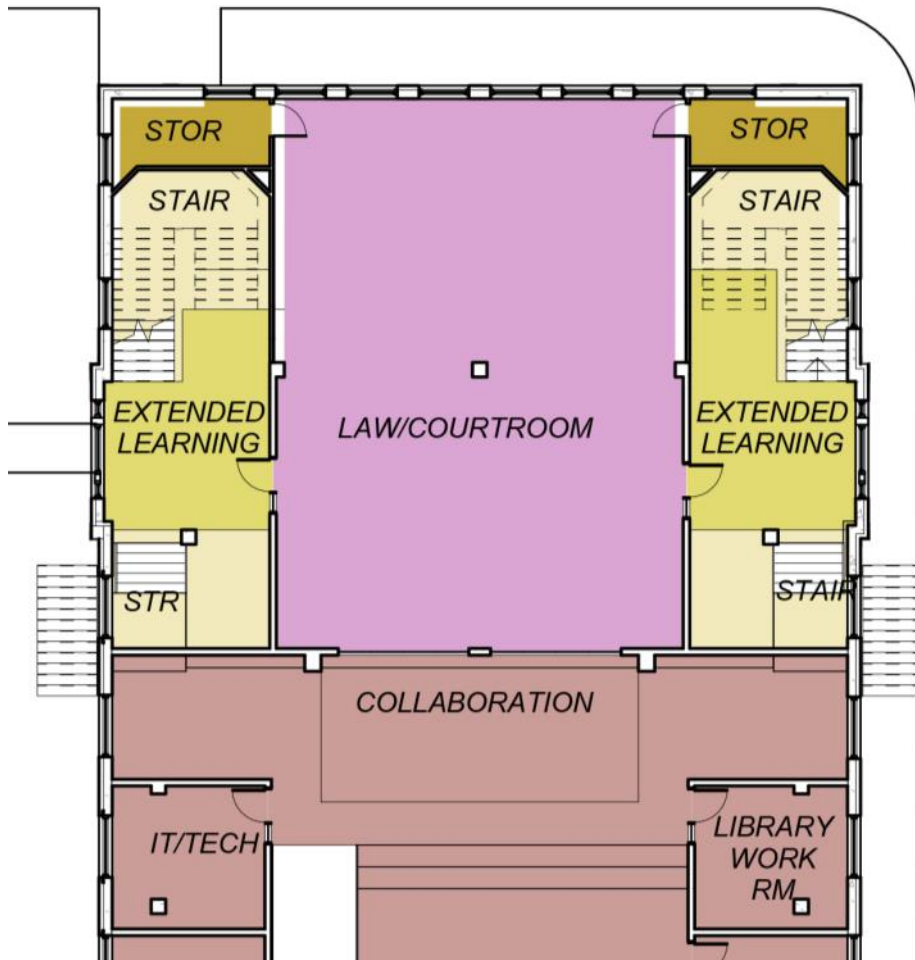


career pathways



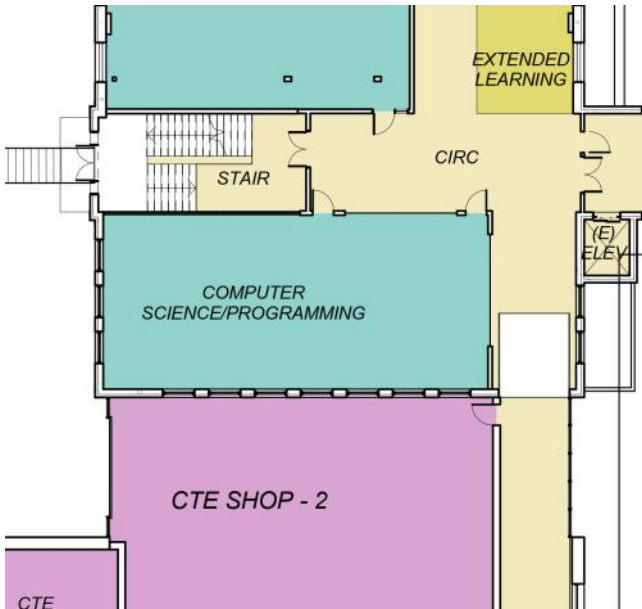
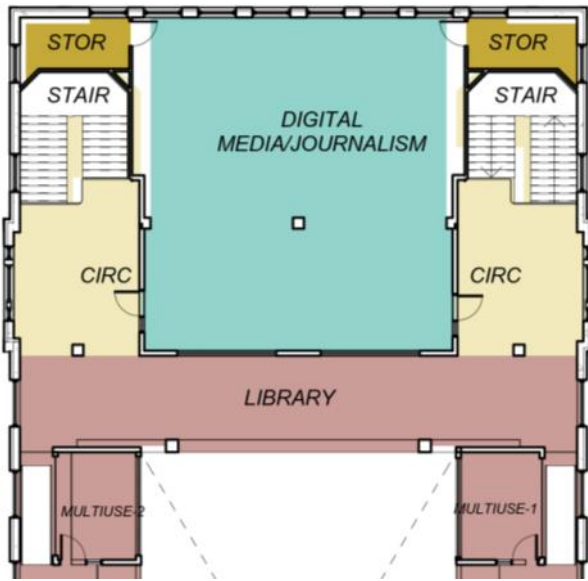
**health science | biomedical**





law | constitution | mock trial





**digital media | cad | comp science**

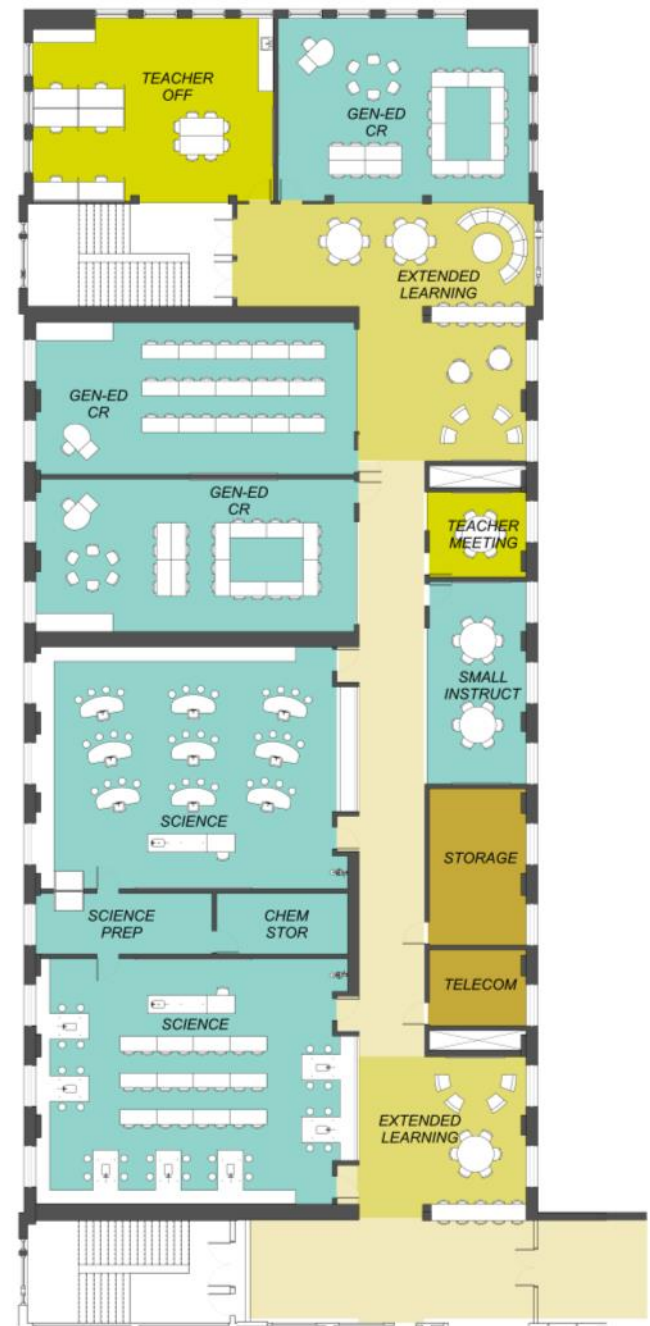
**learning neighborhood review**

**distributed vs. departmental**

**teacher planning areas**

**extended learning areas / learning commons**

**small instructional space**

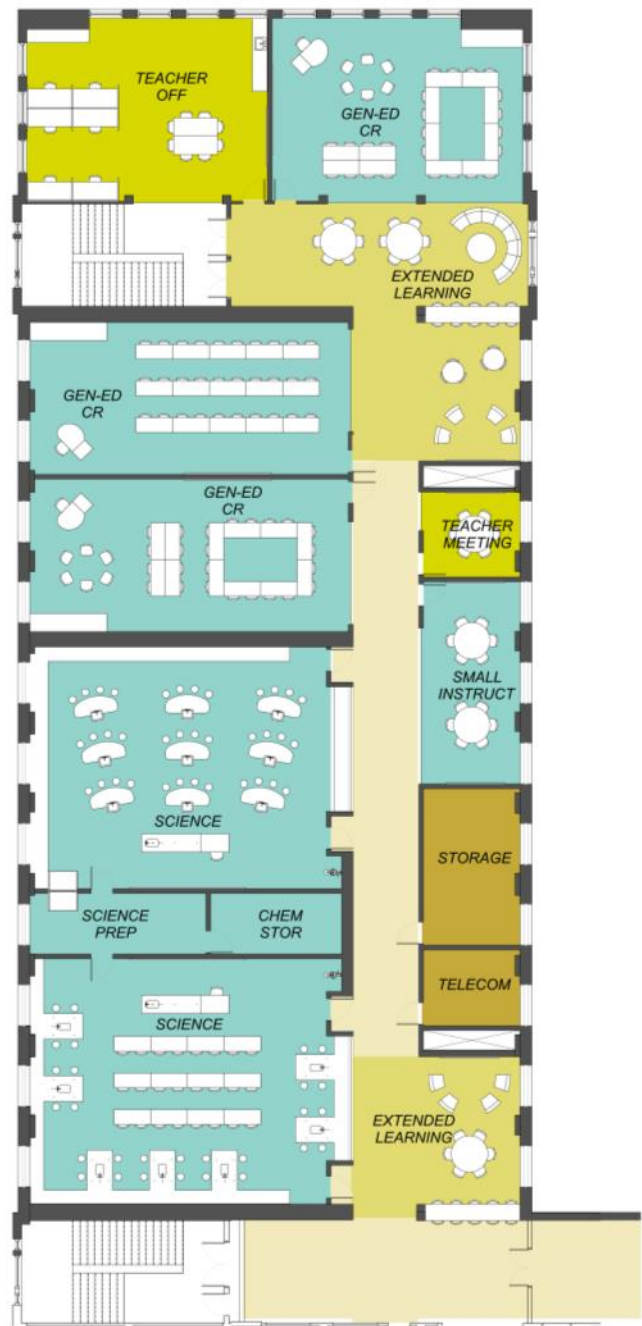


**learning neighborhood model**

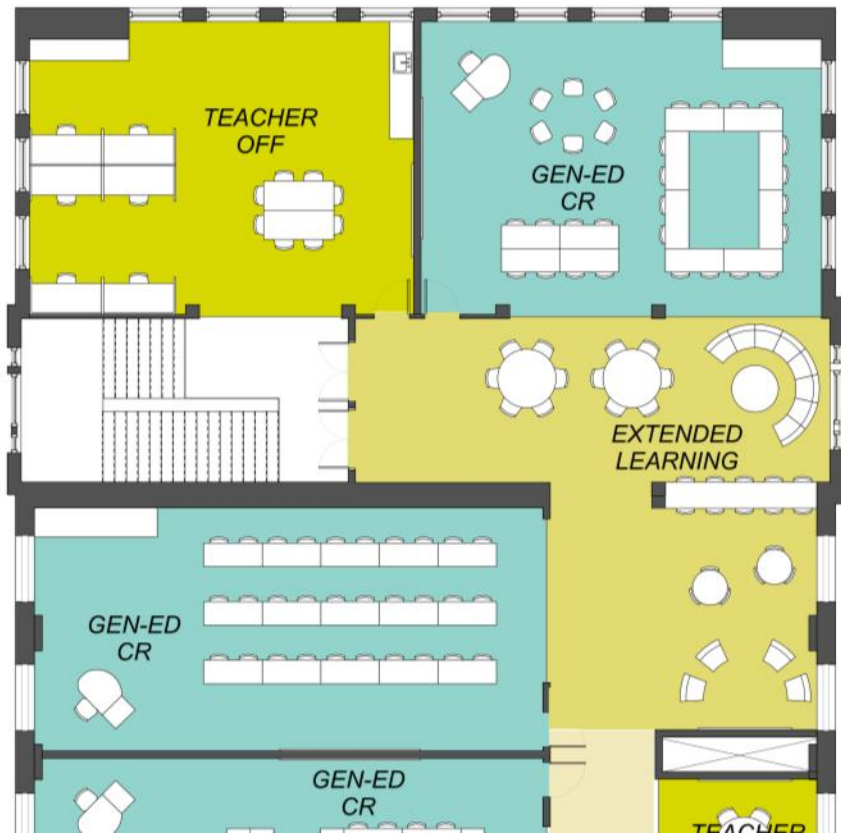




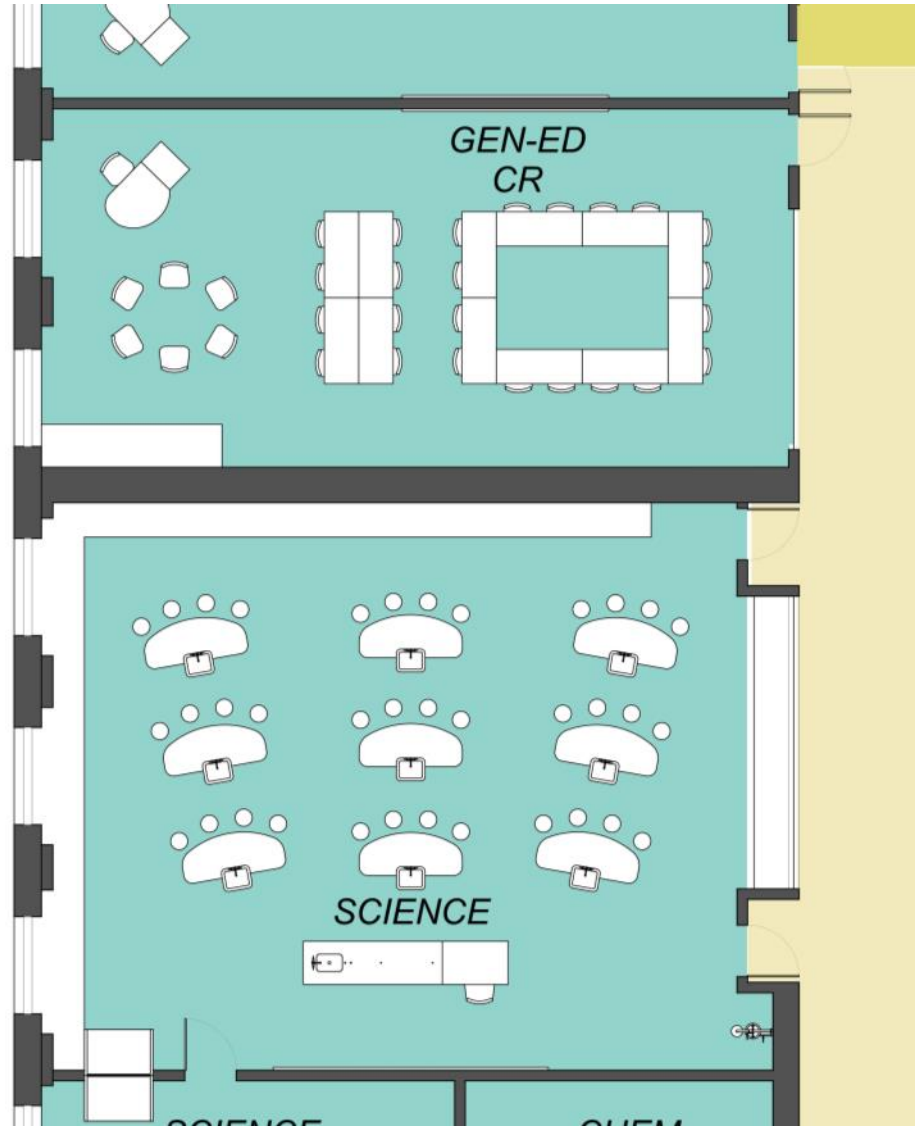
**learning neighborhood model**



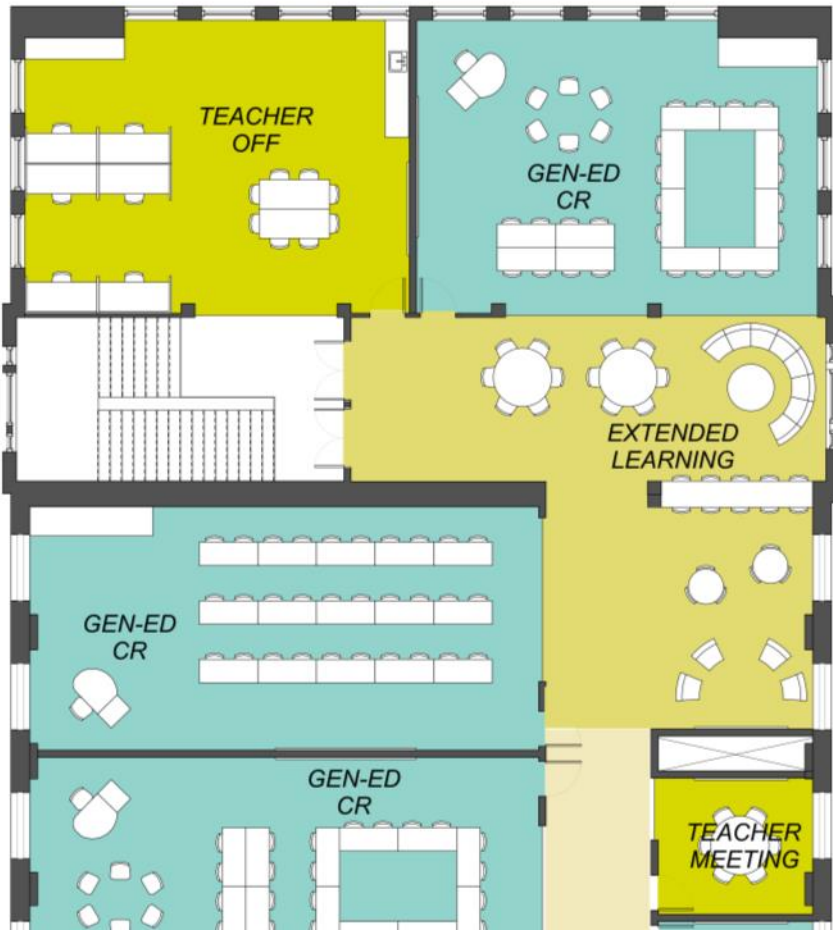




**extended learning areas**



**flexible furniture**



**teacher collaboration**

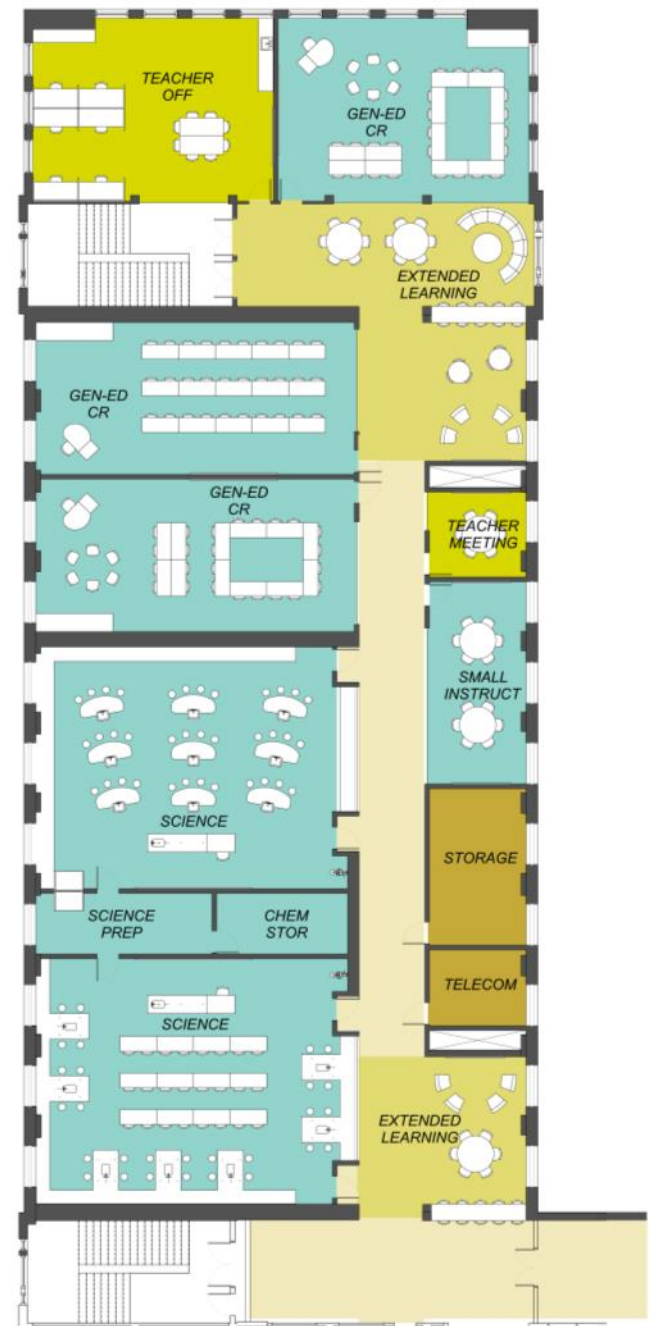


**distributed vs. departmental**

**teacher planning areas**

**extended learning areas / learning commons**

**small instructional space**



**learning neighborhood model exercise**



PPS General Bond Info:

<http://www.pps.k12.or.us/bond/>



Franklin HS Bond Info:

<http://www.pps.k12.or.us/bond/8495.htm>

